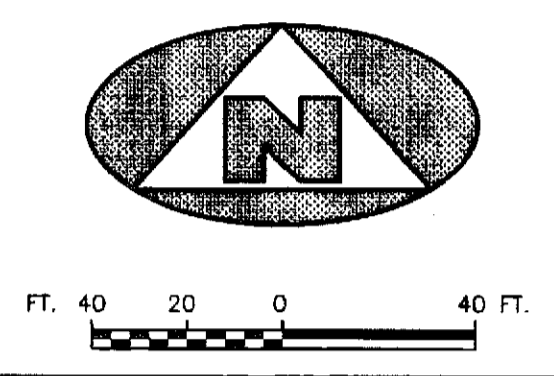
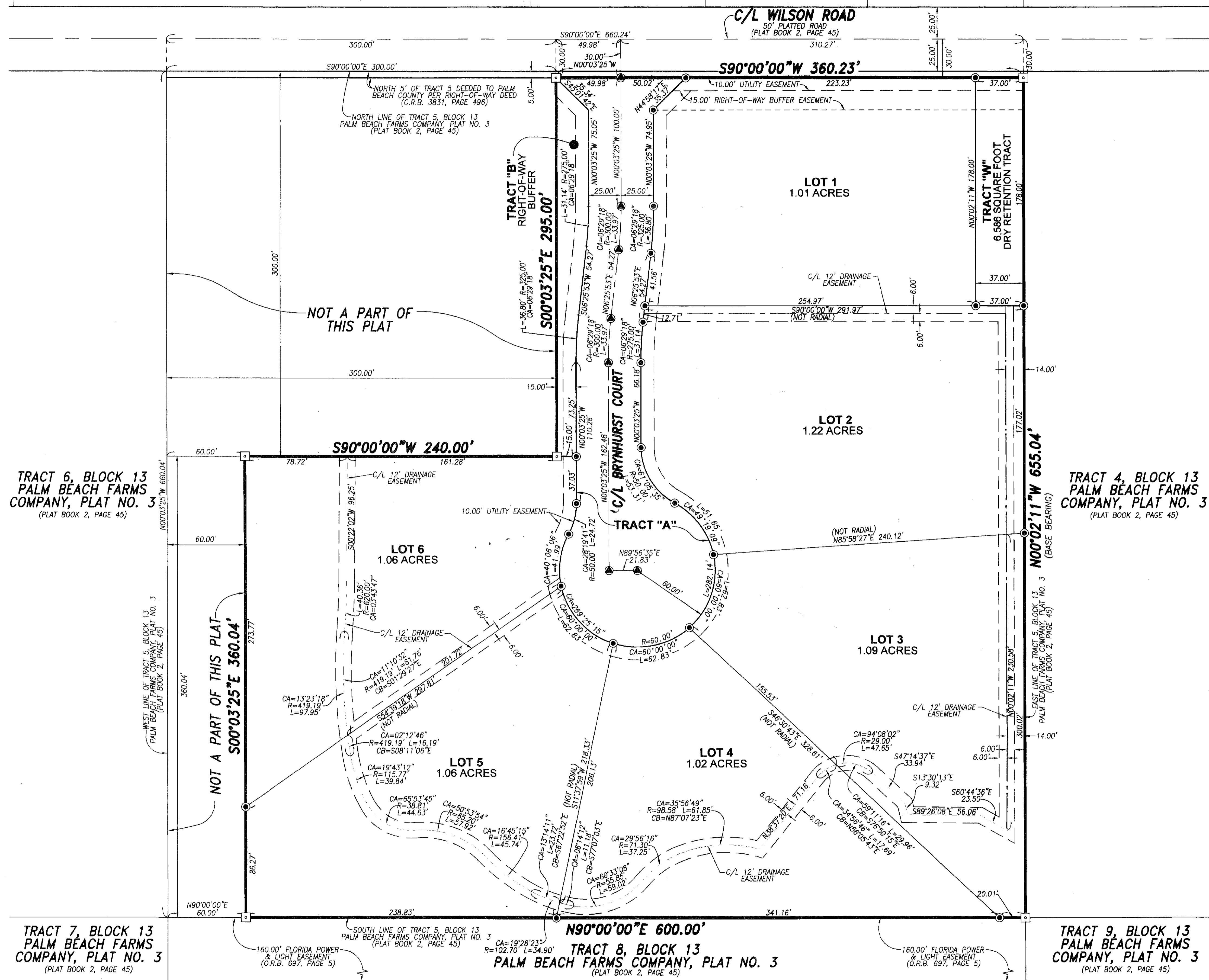


WILSON ESTATES

30

BEING A REPLAT OF A PART OF TRACT 5, BLOCK 13, PALM BEACH FARMS COMPANY, PLAT NO. 3, AS RECORDED IN PLAT BOOK 2, PAGE 45, PUBLIC RECORDS, PALM BEACH COUNTY, FLORIDA, AND LYING IN SECTION 4, TOWNSHIP 44 SOUTH, RANGE 42 EAST, PALM BEACH COUNTY, FLORIDA.



TRACT 6, BLOCK 13
PALM BEACH FARMS
COMPANY, PLAT NO. 3
(PLAT BOOK 2, PAGE 45)

TRACT 4, BLOCK 13
PALM BEACH FARMS
COMPANY, PLAT NO. 3
(PLAT BOOK 2, PAGE 45)

TRACT 7, BLOCK 13
PALM BEACH FARMS
COMPANY, PLAT NO. 3
(PLAT BOOK 2, PAGE 45)

TRACT 8, BLOCK 13
PALM BEACH FARMS COMPANY, PLAT NO. 3
(PLAT BOOK 2, PAGE 45)

TRACT 9, BLOCK 13
PALM BEACH FARMS
COMPANY, PLAT NO. 3
(PLAT BOOK 2, PAGE 45)

LEGEND

☐	DENOTES A 4"x4" CONCRETE PERMANENT REFERENCE MONUMENT STAMPED "PRM LB 7344"
⊙	DENOTES A 5/8" x 18" IRON REBAR AND CAP STAMPED "LB 7344"
●	DENOTES A PERMANENT CONTROL POINT NAIL AND WASHER STAMPED "LB 7344"

SURVEYOR'S NOTES

- BEARINGS SHOWN HEREON ARE BASED UPON AN ASSUMED BEARING OF N00°02'11"W ALONG THE EAST LINE OF TRACT 5, BLOCK 13, PALM BEACH FARMS COMPANY, PLAT NO. 3, RECORDED IN PLAT BOOK 2, PAGE 45, AS SHOWN HEREON.
- THIS INSTRUMENT WAS PREPARED BY STEPHEN L. SHIRLEY, P.L.S. NO. 3918, IN AND FOR THE OFFICES OF ASSOCIATED LAND SURVEYORS, INC., 4152 WEST BLUE HERON BOULEVARD, SUITE 121, RIVIERA BEACH, FLORIDA, 33404

ALS ASSOCIATED LAND SURVEYORS, INC.
4152 W. BLUE HERON BLVD. SUITE 121
RIVIERA BEACH, FLORIDA 33404
PHONE: (661)848-2102 L.B. NO. 7344 EMAIL: als@allsurvey.net

RECORD PLAT
WILSON ESTATES

FILE: W90-0904-PLAT.DWG
SCALE: 1" = 40' WO. NO.: W90-0904
DWN: BLS SHEET: 2 OF 2

LEGEND

C/L	CENTERLINE
CA	CENTRAL ANGLE
CB	CHORD BEARING
L	ARC LENGTH
O.R.B.	OFFICIAL RECORDS BOOK
R	RADIUS
PRM	PERMANENT REFERENCE MONUMENT